

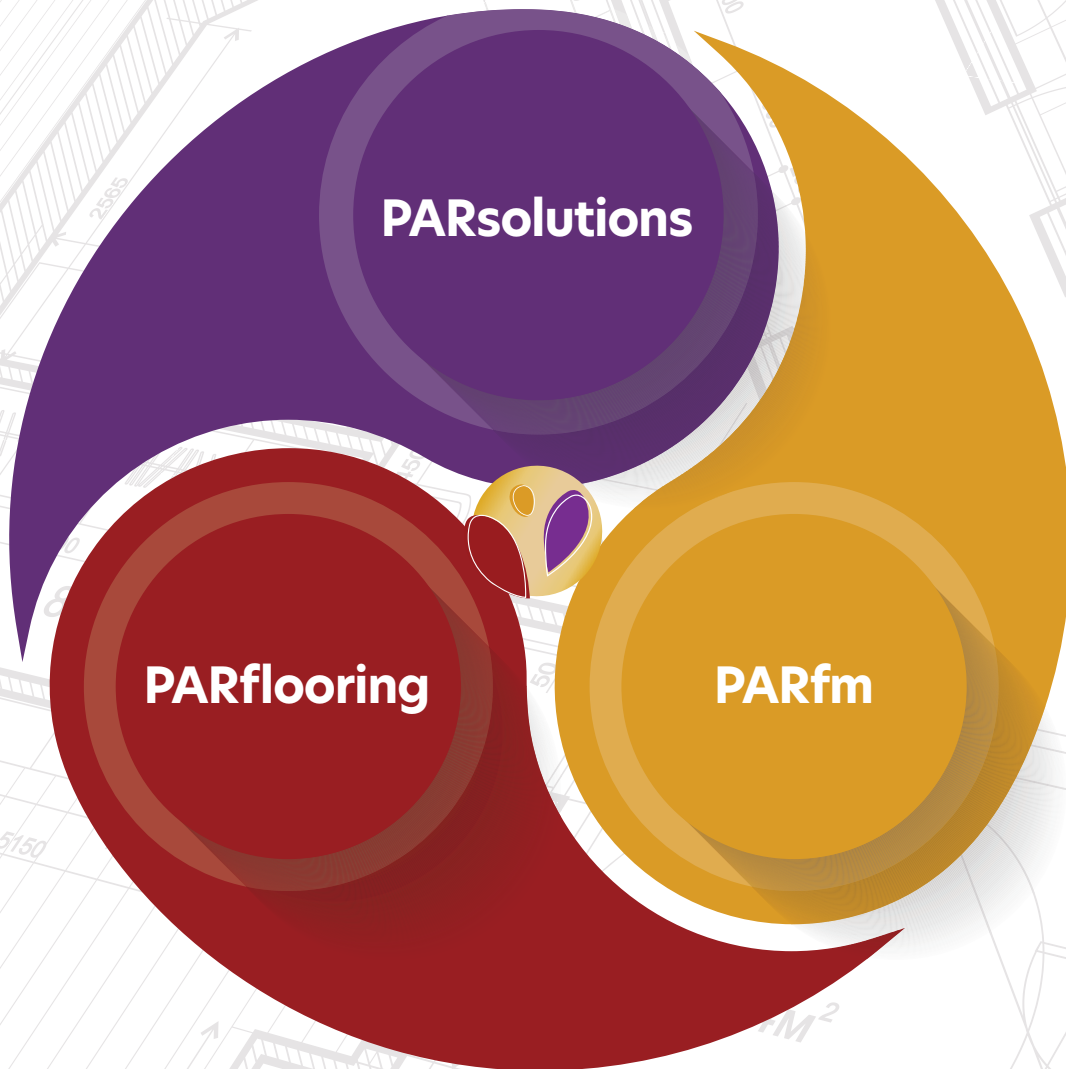
TEAMPAR

The TEAM who brings your space up to PAR.



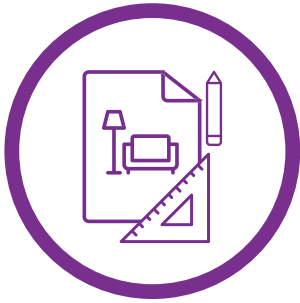
OUR SECRET SAUCE

We listen to your needs and will always be honest as we solve your problems and improve your environment. We will not be happy until you are satisfied... and our 1-year warranty doesn't hurt either!



OUR SERVICES

PARsolutions



DESIGNERS WHO WEAR HARD HATS

We solve your interior design challenges through space planning, furniture procurement, and more.

- Design development that improves the environment through:
 - Space planning
 - Furniture selections
 - Wayfinding and signage
 - Wall murals and infusion of culture
 - Biophilia and “green” best practices
 - Budgeting and campaign fundraising assistance
- Provide turn-key services that control your costs and increase your ROI:
 - Project management
 - Vendor coordination and execution
 - Furniture procurement
 - Professional services: A/MEP
 - Feasibility studies

PARfm

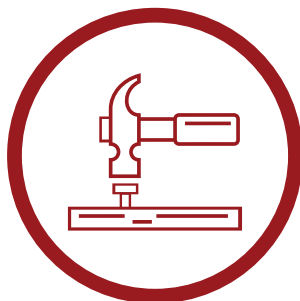


AFFORDABLE SUPPORT FOR YOUR BUILT ENVIRONMENT

We offer comprehensive facility management services and fractional support.

- Future-proofing property expertise, including:
 - Assessing operational, inventory, security, and equipment readiness for compliance audits and quality assurance
 - Developing workflow, asset preservation, and standard operating procedures, including implementing CMMS systems with training and support
- Serving as your owner's representative, with:
 - Facilities conditions assessments and data entry into your CMMS
 - Budgeting assistance and master and sustainability planning
 - Serving as your liaison with vendors, trades, and AMEP professionals

PARflooring



YOUR EDUCATED DEALER

We specify, value engineer, supply and install flooring to increase your ROI.

- Specifying and value-engineering materials to help move a project forward by maintaining the required budget, on time, without compromising aesthetics or warranties
- Assess subfloor conditions and plan for ADA compliance
- Turn-key occupied spaces inclusive of existing flooring removal, furniture movement, and staging and phasing
- Assess lifecycle and maintenance costs to ensure the right investment is made

OUR SATISFIED CLIENTS

VA



U.S. Department of Veterans Affairs



TIFFANY & Co.



Karen and her entire team are an outstanding asset to any service professional! As a Facility Manager of a company with very high standards and sometimes unreasonable expectations, I am glad to be part of the TeamPAR family! The incredible attention to detail they provide, their wealth of knowledge and the family atmosphere they provide make them very pleasant to work with. Give them a try.

Jim Sheets

Building Operations Manager
Tiffany & Co.



Nestlé



RWJ Barnabas
HEALTH





BLAIR ACADEMY



DREW

TeamPAR is a pleasure to work with. They are extremely collaborative, innovative, and caring. Their presentation of projects is beautifully designed and extremely informative. Our first project with TeamPAR was the creation of a state of the art, groundbreaking modern (& useful) learning space for our ASD program. TeamPAR has the ability to recognize the importance of space and reimagining how to optimize areas for student growth, learning, and most of all, wellbeing!

Jeremy Braverman
Principal, Howell High School

What can I say about TeamPAR? When our school started doing renovations, we were new to the game. TeamPAR came in, gave us expert guidance and executed our project seamlessly, on budget and on time! We know there were bumps in the road, but they were smoothed out before we even had a chance to worry. Companies like this don't come along everyday- we were very lucky to find such an amazing team.

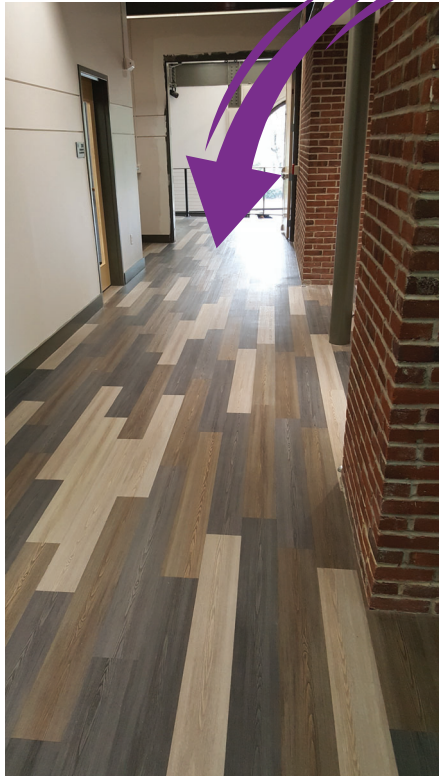
Karen Meisinger
CFO, The Craig School



OUR WORK

WHAT REALLY SETS TEAMPAR APART IS OUR FOCUS ON YOU, OUR CLIENT. We take the time to understand your needs and goals, then value-engineer solutions that make sense for your space.

That's why we're known as designers who wear hardhats. We're not just about supplying and installing flooring or furniture. We go the extra mile to tailor our specifications to enhance your return on investment and reduce ongoing costs. It's about giving you a personalized experience where every detail is designed to solve your problems and add value where it counts.



Incorporating biophilic design principles, like wood flooring that mimics tree bark, not only subtly enhances the space but also significantly reduces stress, boosts focus and increases performance in work and learning environments.

Integrating company branding and colors into design enhances organizational identity and welcomes both employees and visitors.



By transforming an underutilized area into an open, collaborative space we can reinforce team building and creativity. Added acoustical solutions ensure form and function.



Implementing wall murals is an effective and economical strategy to infuse spaces with cultural or biophilic elements.



Carefully selecting functional, timeless, and sophisticated furnishings is especially important for educational environments to ensure long-term value and adaptability to meet evolving needs.



Transforming a traditional space into a modern command center, while preserving its historic charm, creates a unique and stimulating work environment that inspires innovation.



Infusing school spirit through colors, mascots, and branding in gymnasiums builds a sense of community and opens doors to valuable fundraising possibilities.



Choosing the right flooring with optimal IIC & STC insulation ratings is essential for ensuring comfort and privacy in multifamily developments.

TEAMPAR



354 Route 206, 2nd Floor, Flanders, NJ 07836
P: (973) 292-0089 • Info@TeamPAR.com
www.TeamPAR.com