



NEW



IT'S ONLY A PLAY

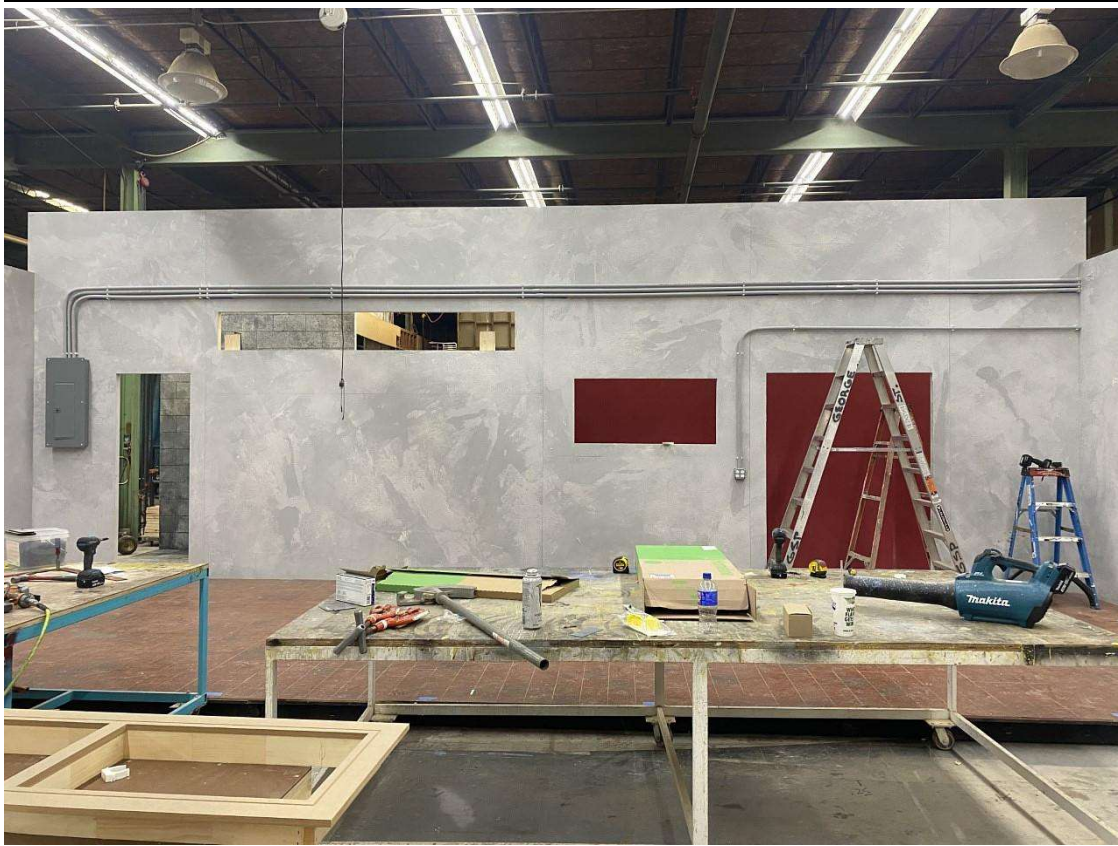
GEORGE STREET PLAYHOUSE
BY TERRENCE McNALLY
DIRECTED BY KEVIN CAHOON
SCENIC DESIGN BY DAVID L. ARSENAULT



S.D. 10441
SCENIC DESIGNER



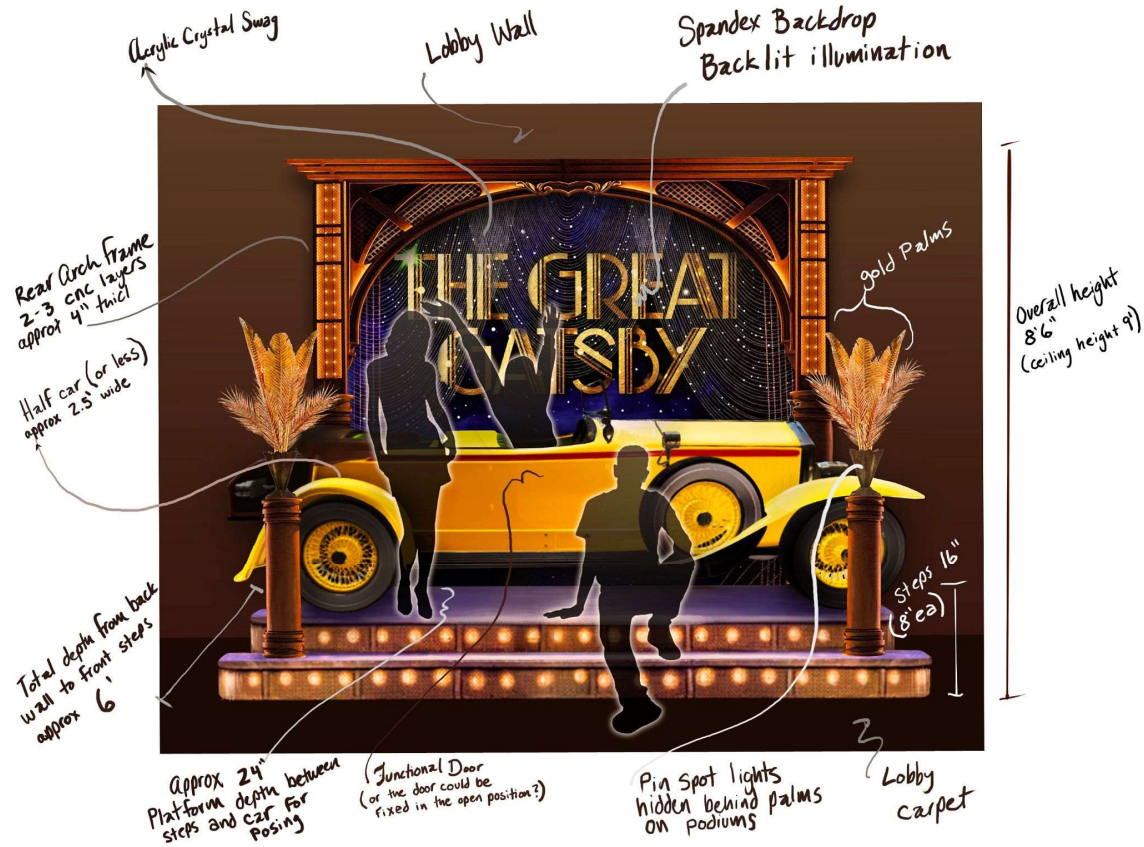
















Baipas

“Chin’s set is remarkable for its confining feeling that includes an airiness that suggests possible escape.” - Princeton Info

“...begin the play off-balance themselves, thrown together in a box (designed by Wilson Chin) that, we soon learn, represents a rather sleek and artful take on Purgatory.” - NJArts.net

“...its inventive presentation did at least make it dazzling on that level. And so it was, ultimately, a memorable experience.” - NJArts

It's Only A Play

“A stylish, luxury townhouse set by David L. Arsenault gives the production a richness that zoom backgrounds lack...” - Theatrely

“But there are no weak figures in this cast as they tell this story on David L. Arsenault’s stunning set.” - New Jersey Stage

“Amid the lush anteroom of a tony Manhattan townhouse—rendered with casual elegance...” - Broad Street Review

Her Portmanteau

“Set designer Shoko Kambara expertly creates a detailed bi-level visual for the audience. Atop is John F. Kennedy Airport Terminal Five arrivals with a bank of payphones, an elevator, and chairs. Below is a New York City apartment richly appointed with brick, artwork, many pillowed couch and small kitchen. It is the perfect set up for a family with tensions set to boil over.” - NJ Stage

Joy

“Anna Louizos’ set is as dazzling a piece of work as has been seen on the George Street Playhouse’s stages in a long time, which, when combined with Jen Schriever’s lighting and Dan Moses Schrier’s sound designs, creates the many worlds of Joy, from her Long Island home to the QVC studios to a Texas courtroom. Rick Edinger’s orchestra provides a lively accompaniment to the on-stage action. - Out in Jersey”

Clydes’

“The clever use of neon, the battered kitchen equipment, mop pail, staff lockers, and other accouterments—the set’s terrific” - Front Row Center

“the cluttered, dingy, intricately detailed and marvelously realistic set: a diner kitchen that becomes a battleground.” - NJ Arts

“The story is told in a kitchen [designed by Riw Rakkulchon] that is so accurately detailed that it is almost a character in itself.” - New Jersey Stage

Spelling Bee

“The scenic design, by Jason Simms, manages to make the middle school cafeteria/auditorium in which the bee takes place (with the musical’s five musicians visible on a back stage) colorful and cluttered but also sadly institutional, all at once.” - NJ Arts

“The first hint it will be comes the minute one enters the Arthur Laurents Theater and sees Jason Simms’ perfect set. It is an authentic high school auditorium, a little worn as if it has been home to many events over several decades. Touches like a glassed-in bulletin board, pom-poms in school colors, and decorations made from construction paper take one back to adolescent days spent in just this kind of room. Simms finds the right balance between the witty and the tacky. It sets the tone for all Hanlon and Braun will do next. Which is plenty.” - Princeton Info

What The Constitution Means To Me

“[Shoko Kambara’s] Legion-post set was remarkably authentic and perfect for the overall play.” - Princeton Info

Shark Is Broken

“Sit back and close your eyes for a moment and you might actually feel like you are at the shore. That’s how good this set is.” - Let’s Go to the Theater

“In “The Shark is Broken” at George Street Playhouse, the main star is a boat that is among the most impressive set designs I’ve ever seen. It not only looks incredible, but moves around and provides the 3D effect that Jaws 3 wishes it had. My first thought was that it’s such a shame that this will likely be taken apart following the run.” - NJ Stage

King James

“Frank J. Oliva’s three sets are complete and witty wonders that go far beyond most modern construction for fun and detail. (I love the neon basketball, arrow pointing to music downstairs, and far stage-right photo of LeBron wearing a Sharpie-drawn freestyle crown that decorate the bar scene, and the various knickknacks that populate the curio shop.)” - Princeton Info

“Frank J. Oliva’s sets have you looking at all of the details and facets Oliva puts in them. These sets stun when they appear yet give George a lot of room for flexibility.” - Princeton Info

“George Street’s production boasts a marvelous set design by Frank J. Oliva, depicting Matt’s wine bar in the first act and Matt’s parents’ store, a hodgepodge of antiques, curiosities, and just plain junk, in the second act. It fills the stage, and its attention to detail adds immensely but not obtrusively to the realism of the play.” - Out In NJ