


BRYAN ELECTRIC


PREPARED BY


Timothy Bryan, Jr.
Bryan Electric Inc.

PREPARED FOR

NJMP&TC

 www.bryanelectricco.com

 info@bryanelectricco.com

 609-393-8325





Our Mission Is Clear

Deliver the highest quality electrical and sustainable energy services and installations to our customers on time and on budget.

From inception in 1980 to the present, our relationship with customers is driven and maintained by our expert knowledge, high integrity, and intense desire to create customer satisfaction. We pride ourselves on capturing and retaining customers through simple values such as honesty and hard work.

With over 100 years of combined experience in electrical contracting and related services, we've developed an efficient process to execute complex projects from start to finish.

Our firm has installed 900+ EV Charging Stations across the tri-state area for a variety of customers. Aside from EV Charging Stations, we remain involved in other areas of the electrical contracting industry. Experience with general & electrical contracting, LED lighting, Fire Alarm, Communications, Surveillance, etc. keep us busy across verticals including but not limited to State Government, Municipal, K-12, Higher-Ed, and routine maintenance.

To follow is key information that you can use to evaluate our company. We are excited about the opportunity to earn your business. Please do not hesitate to call myself or another associate with any questions.

We look forward to starting a long lasting relationship!

Best Regards,
Timothy Bryan, Jr.

BRYAN ELECTRIC

founded in 1980

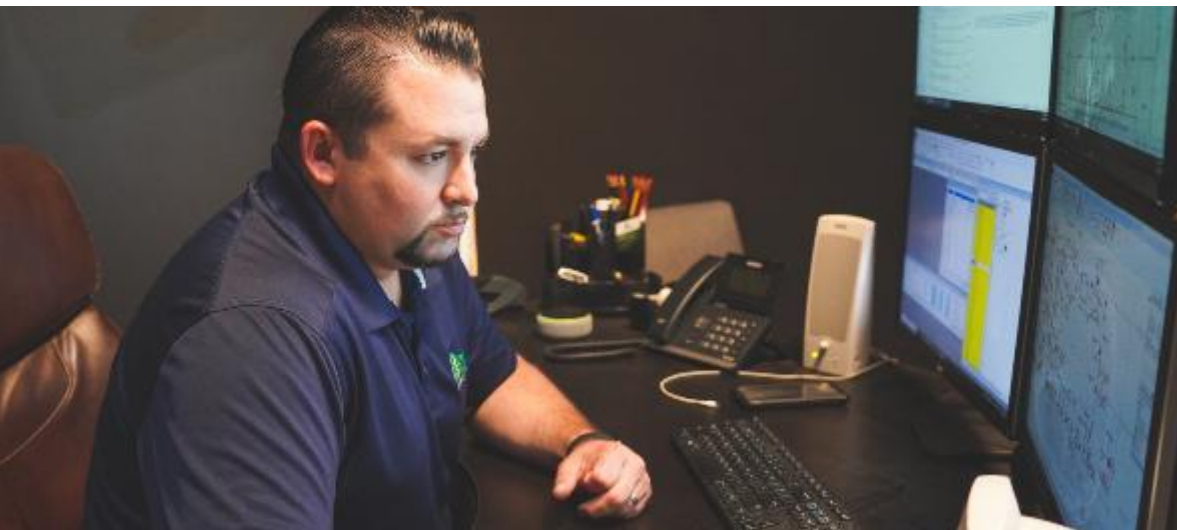
Licensed in New Jersey, Pennsylvania and Delaware, Bryan Electric understands that the most efficient way to complete a project on time and on budget is to employ a great team.

You will find our office staff to be alert and responsive and our field personnel well trained and competent across all facets of the work they will perform for you.



We are most proud of our commitment to **"SELF-PERFORM"**

"Self-perform" is a term we use to describe our capability to complete each part of your project with our own team members and resources "in-house."



We've been installing Electric Vehicle charging stations since 2010 and have installed 900+ to date. To insure maximum success for every EV project, our entire company has completed the vigorous EVITP (Electric Vehicle Infrastructure Training Program) training program and we have a trainer on staff to train new employees.

When you call, you are always communicating with a trained, qualified staff member, eager to solve problems and educate our end-users through our own experiences.

OUR CAPABILITIES

EV CHARGING STATIONS



RETRO-FIT LIGHTING



UTILITY COORDINATION

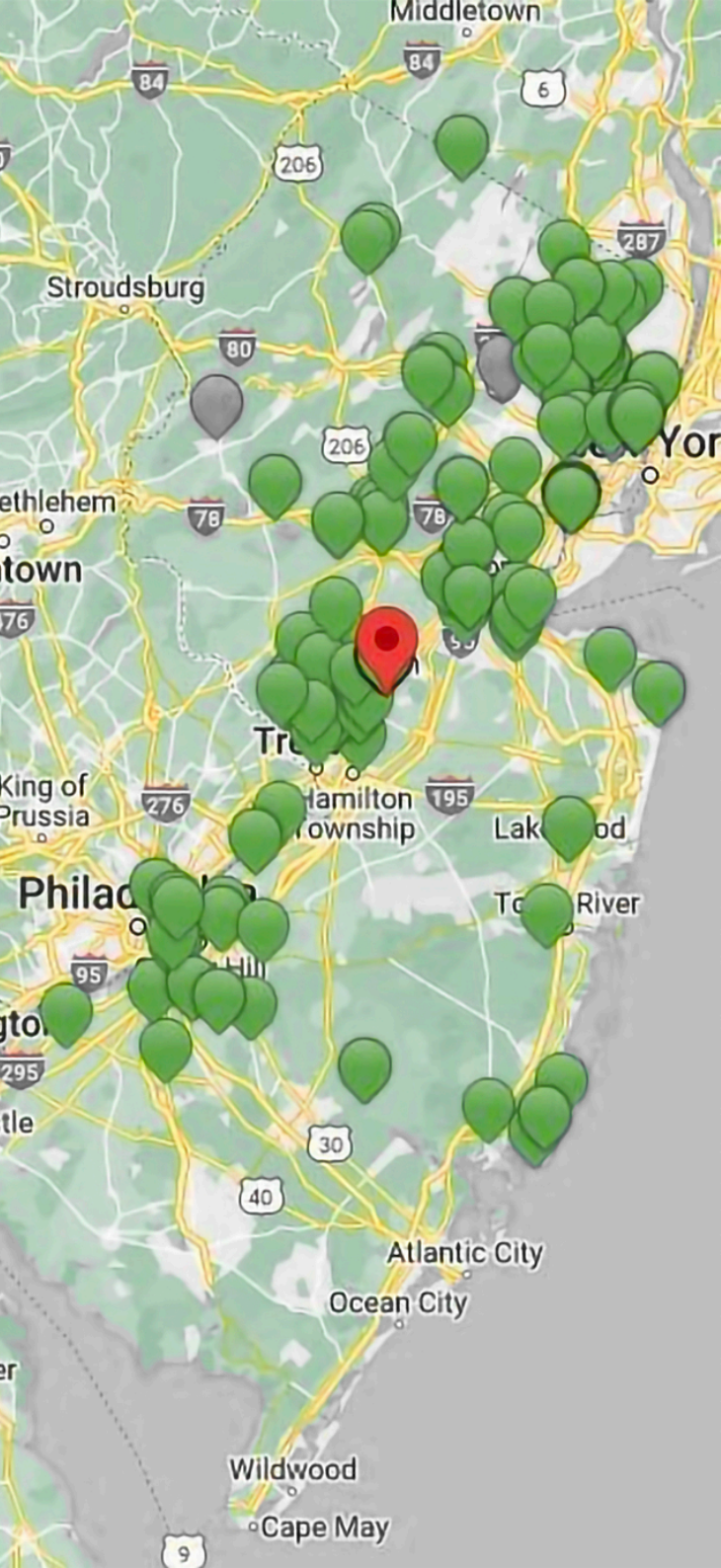


CONSTRUCTION

SERVICE

DESIGN-BUILD ENGINEERING

DIRECTIONAL DRILLING



COMPLETED JOBS

MUNICIPALITIES

- | | | | |
|---------------------------|-------------------------|------------------------|---------------------|
| Atlantic City | Cranford | Montgomery Township | Rutherford City |
| Beach Haven Township | East Brunswick Township | Morris Plains Township | Sparta Township |
| Berkeley Heights | Evesham | Morris Township | Summit City |
| Berkeley Township | Ewing Township | Neptune City | Teaneck Township |
| Bernard Township | Green Brook Township | Newton Township | Verona Township |
| Bloomfield Township | Hamilton Township | North Brunswick | Waldwick Township |
| Bordentown City | Harvey Cedar | North Plainfield | Washington Borough |
| Borough of Franklin Lakes | Highland Park Borough | Ocean City | Washington Township |
| Brick Township | Hillsborough Township | Old Bridge Township | Willingboro |
| Bridgewater Township | Hoboken | Oradell Borough | Woodbridge Township |
| Caldwell Borough | Hopatcong Borough | Faramus Borough | ...and more! |
| Camden City | Lawrence Township | Fassaic City | |
| Cape May City | Leonia Borough | Fitman Township | |
| Cedar Grove | Lincoln Park Borough | Princeton | |
| Chatham Borough | Little Egg Harbor | Ridgefield Borough | |
| Chatham Township | Long Beach Township | Roxbury Township | |
| Collingswood | Monroe Township | Runnemede Borough | |

COUNTIES

- Bergen County
- Essex County
- Gloucester County
- Hudson County
- Mercer County
- Middlesex County
- Morris County
- Passaic County
- Somerset County
- Warren County

EDUCATIONAL NON-PROFIT

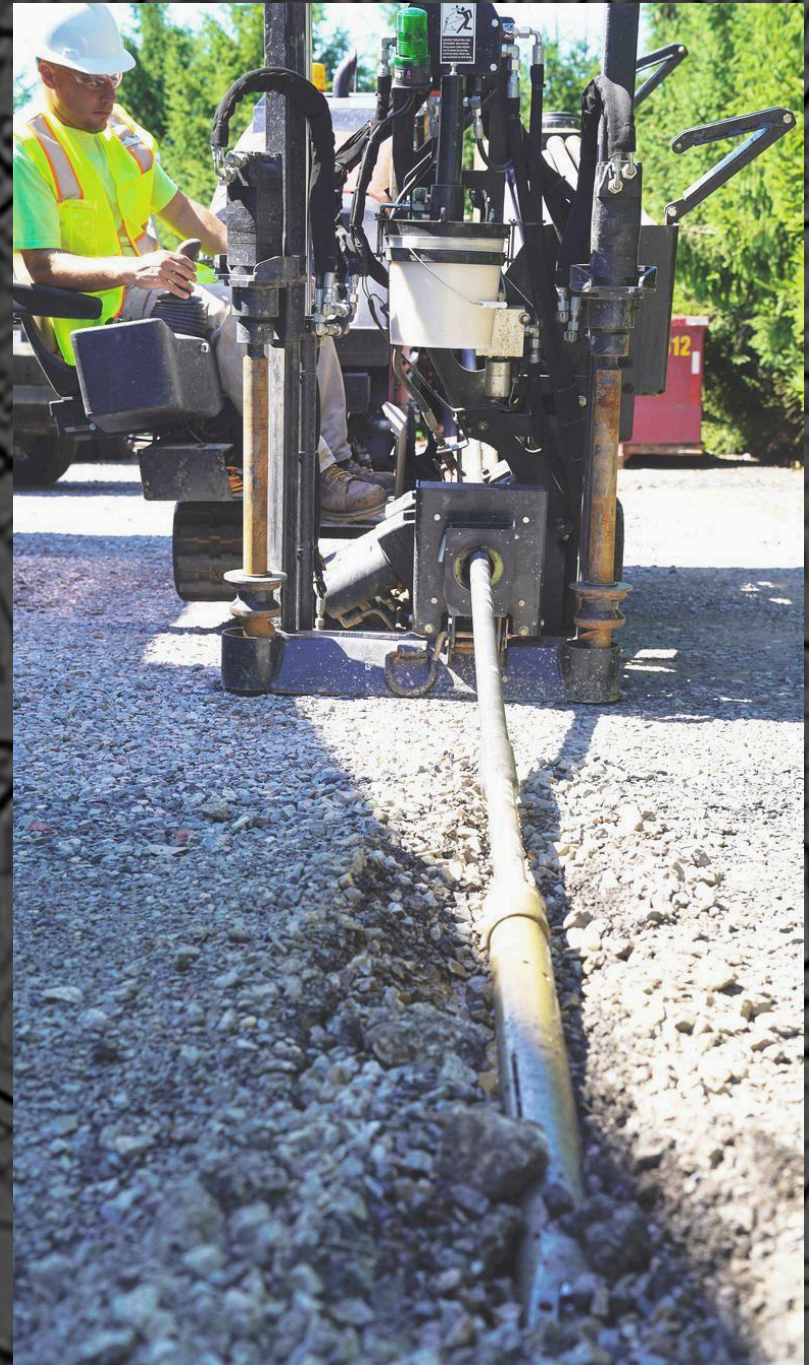
- Bergen Community College
- Camden County Vocational Fellowship Foundation
- Grounds For Sculpture
- Jersey City Board of Education
- Mercer County Vocational
- Newark Board of Education
- Orange Board of Education
- Rowan university
- Rutgers University
- TCNJ

STATE AGENCIES

- DRBA
- NJ Transit
- NJCRDA
- NJDEP

ACTIVE JOBS

Job Number	Project Name	Scope of Project
24-065	Edgewater Municipal Bldg.	2 dual-port Level 2 Public Chargers
24-066	Edgewater Weimann Field	2 dual-port Level 2 Public Chargers
24-067	Edgewater Memorial Field	2 dual-port Level 2 Public Chargers
24-068	West Orange Library	2 DCFC Public Chargers
24-073	Collingswood DPW	1 dual-port Level 2 Public Charger
24-076	CCMUA	4 Level 2 Fleet Chargers, 1 Level 2 dual-port, 2 DCFC Public Chargers
24-077	Atlantic Highlands Pier Lot	3 dual-port Level 2 Public Chargers
24-080	NJDEP Hopatcong	2 dual-port Level 2 Public Chargers
24-081	Onyx - NJT HQ2	45 dual-port Level 2 Fleet Chargers
24-082	Trenton Waste Dept	2 DCFC Public Chargers
24-092	Suburban Consulting Engineers	1 dual-port Level 2 Public Charger
24-095	Atlantic City City Hall	4 DCFC Public Chargers, 1 dual-port Level 2 Public
24-097	New Providence EVCS	1 dual-port Level 2 Public Charger
24-100	Rutgers 33 KB DCFC	2 DCFC Public Chargers
24-106	Burlington City	5 dual-port Level 2 Public Chargers
24-111	N. Johnston Ave	1 dual-port Level 2 Public Charger
24-108	Essex County Turtle Back Zoo	3 dual-port Level 2 Public Chargers
24-113	City of Passaic Parking Garage	7 dual-port Level 2 Public Chargers
24-114	Chatham EMS	1 dual-port Level 2 Public Charger
24-115	Woodbridge New St. Assure Y4	3 dual-port Level 2 Public Chargers
24-116	577 N. Main St.	1 residential charger
25-008	Rutgers Life Long Learning	3 dual-port Level 2 Public Chargers
25-010	Studio Park R&R	2 dual-port Level 2 Public Chargers
25-011	Maxwell Assests R&R	2 dual-port Level 2 Public Chargers
25-017	Rutgers Yellow Lot	2 dual-port Level 2 Public Chargers
25-018	Rutgers Lot 105	2 dual-port Level 2 Public Chargers
25-019	Rutgers Lot 89	1 dual-port Level 2 Public Charger
25-021	NJDEP ORD	1 dual-port Level 2 Public Charger
25-024	NJDEP Bulls Island	1 dual-port Level 2 Public Charger
25-025	SJPC	8 dual-port Level 2 Fleet Chargers
25-033	HCIA Fleet Cards	N/A
25-035	Plainfield Parking Lot	6 dual-port Level 2 Public Chargers
25-042	Rowan School of Nursing	2 dual-port Level 2 Public Chargers
25-043	Ocean County Stafford Library	5 dual-port Level 2 Public Chargers
25-044	NJDEP Cheesequake	2 dual-port Level 2 Public Chargers
25-045	NJDEP Assunpink	1 dual-port Level 2 Public Charger
25-046	ARDC Assure Commit	6 dual-port Level 2 Public Chargers
25-047	Somerset County	2 dual-port Level 2 Public Chargers
25-050	NJDEP Bulls Island Main Garage	1 dual-port Level 2 Public Charger
25-051	NJDEP Barnegat Lighthouse	1 dual-port Level 2 Public Charger
25-052	NJDEP Bass River State Forest	2 dual-port Level 2 Public Chargers
25-053	NJDEP IBSP Main. Garage	1 dual-port Level 2 Public Charger
25-054	NJDEP Millville Wildlife	1 dual-port Level 2 Public Charger
25-055	NJDEP Wharton State Forest	2 dual-port Level 2 Public Chargers
Total		299 total number of ports



	2023	2024	2025
Experience Modifier Rate	.858	.867	.832
Lost Time Incident Rate	0.00	0.00	0.00
Recordable Incident Rate	0.00	0.00	0.00



SAFETY IS A TOP PRIORITY



Safety

The goal of our Safety Policy is the health and well-being of our employees and members of the public. Our safety and accident prevention policy and safety training programs have been carefully constructed to eliminate/control the hazards and risks associated with all company operations with the following in mind: minimizing personnel injuries, protecting property, achieving maximum efficiency, reducing unnecessary costs, and complying with all applicable regulations.



Drug Free Policy

BEC is committed to a drug-free work place, and conducts pre-employment, post-accident, random, and for-cause drug screening.



Safety Team

BEC's full-time safety team is lead by Tim Bryan Sr., Vice President of Bryan Electric Co. Our entire team is overseen by the Executive Board who oversee our safety coordinators. The Safety Management Team has combined experience of over 100 years in electrical trade safety.



Safety Program

- Pre-Employment/Post-Incident Drug Screening
- Drug Screening
- New Employee Safety Orientation & Training
- CPR/First Aid Training
- Hot Work Program & Training per NFPA 70E 2009
- Job Hazard Analysis Program
- OSHA 10/30 Hour Training
- Lockout/Tagout Procedure
- Vehicle/Driver Program
- Weekly "Toolbox" Safety Meetings
- Mandatory Annual Safety Training

KEEP IT SIMPLE

I have always been disappointed when I couldn't meet a client's expectations. Over the years I've realized that most of our pitfalls came from confusion, poor communication, bad timing, or just plain mistakes. Complexity breeds problems. I wanted to change that. I realized I had to change the process and make it simple.

Our commitment to "self-perform" is a game changer. It's enabled us to "keep it simple." Taking the additional time to reflect on, learn from, and most importantly educate our immediate staff has proven to be a sound investment of time, money, and resources. We've eliminated wasted time and broken communications. We've gained as much control over our work as we possibly could. We've emerged with a proven process.

We all have demanding schedules and obligations. And we recognize that time is money. We've created a team that limits the back-and-forth, the "I'll get back to you," or the "I don't know." Our team has the competence to answer clients' needs quickly and correctly.

We have the utmost respect for the trust our clients place in us. I hope we'll have the opportunity to show you. Together we can get the job done and Keep It Simple!

Sincerely,

Timothy Bryan, Jr., CEO



Timothy Bryan Jr., CEO

***“Complexity breeds problems.
I wanted to change that.”***